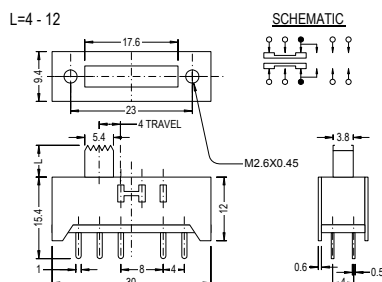


Slide Switch SS Series

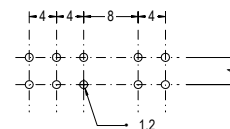
SS24H03



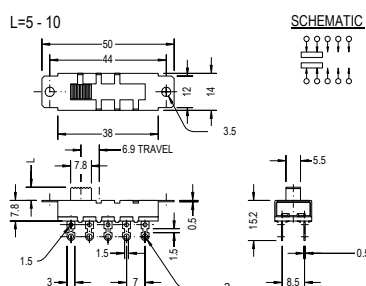
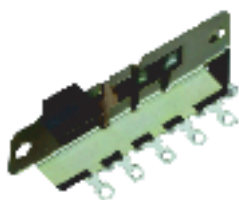
SPECIFICATION

- Circuit : ON-ON-ON-ON(2P4T)
- Rating : D.C. 50V 0.3A
- Timing : Shorting

P.C.B. HOLE DETAIL



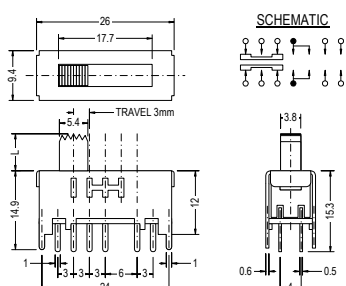
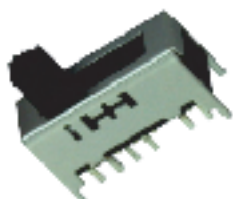
SS24N01



SPECIFICATION

- Circuit : ON-ON-ON-ON(2P4T)
- Rating : A.C. 250V 3A
- Contact R.[max] : D.C. 5V 1A 30m
- Insulation R.[min] : D.C. 500V 100M
- Withstand VOL. : A.C. 500V 1minute
- Operating force : 300 100g
- Timing : Non Shorting
- Life cycle[max] : 10,000 CYCLES

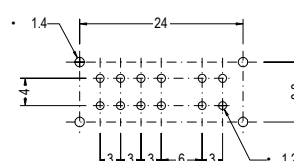
SS25F02



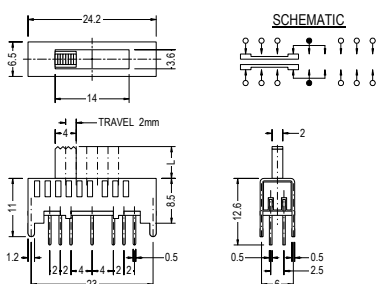
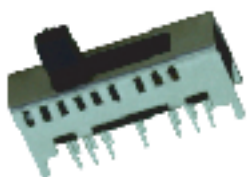
SPECIFICATION

- Circuit : ON-ON-ON-ON-ON(2P5T)
- Rating : D.C. 50V 0.3A
- Timing : Shorting

P.C.B. HOLE DETAIL



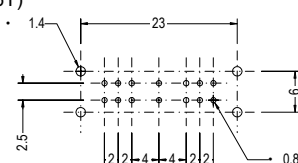
SS26D02



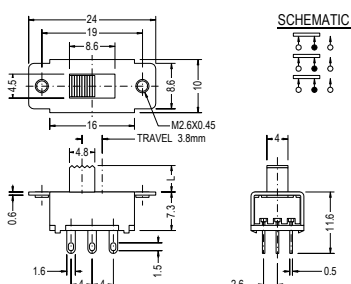
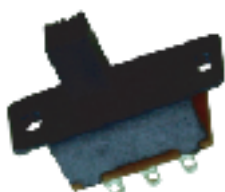
SPECIFICATION

- Circuit : ON-ON-ON-ON-ON-ON(2P6T)
- Rating : D.C. 50V 0.3A
- Timing : Shorting

P.C.B. HOLE DETAIL



SS32H01

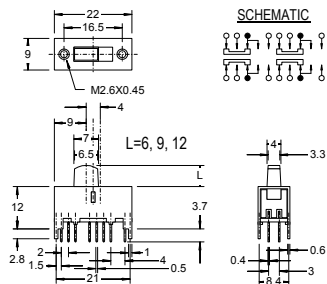


SPECIFICATION

- Circuit : ON-ON(3P2T)
- Rating : D.C. 50V 0.5A
- Contact R.[max] : D.C. 5V 1A 30m
- Insulation R.[min] : D.C. 500V 100M
- Withstand VOL. : A.C. 500V 1minute
- Operating force : 300 100g
- Timing : Non Shorting
- Life cycle[max] : 10,000 CYCLES

Slide Switch SS Series

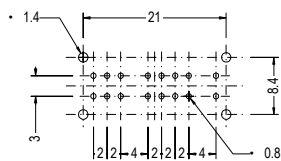
SS-204-42.SS-204-43



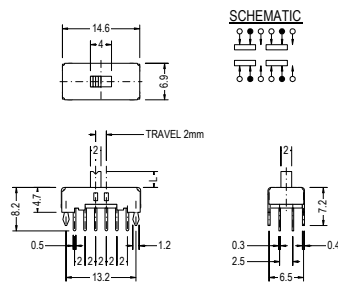
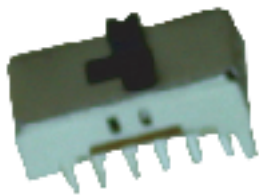
SPECIFICATION

- Circuit : ON-ON , ON-ON-ON
- Rating : D.C. 50V 0.3A
- Timing : Shorting

P.C.B. HOLE DETAIL



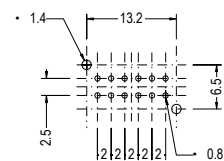
SS42D02



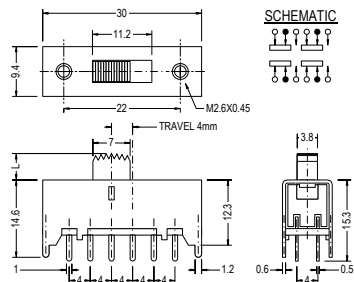
SPECIFICATION

- Circuit : ON-ON(4P2T)
- Rating : D.C. 50V 0.3A
- Timing : Non Shorting

P.C.B. HOLE DETAIL



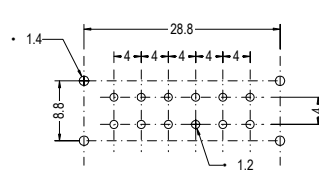
SS42H03



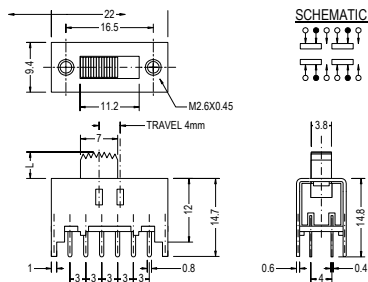
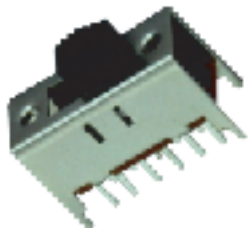
SPECIFICATION

- Circuit : ON-ON(4P2T)
- Rating : D.C. 50V 0.3A
- Timing : Shorting

P.C.B. HOLE DETAIL



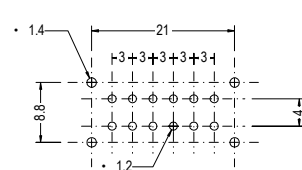
SS42H11



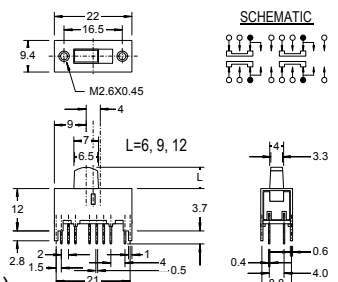
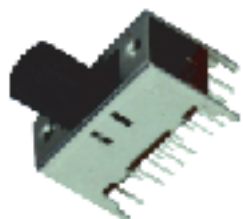
SPECIFICATION

- Circuit : ON-ON(4P2T)
- Rating : D.C. 50V 0.3A
- Timing : Shorting

P.C.B. HOLE DETAIL



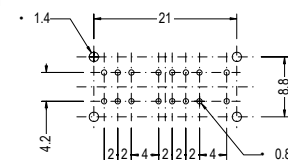
SS42H08.SS42H38.SS43D01



SPECIFICATION

- Circuit : ON-ON , ON-ON-ON
- Rating : D.C. 50V 0.3A
- Timing : Shorting

P.C.B. HOLE DETAIL



(SS-203-42) / (SS-203-43)

